

# CONTRACT A INDUSTRIAL RAILWAY PLANS HAYESTONE-BRADY INDUSTRIAL PARK DEVELOPMENT

## FOR THE STEPHENS COUNTY DEVELOPMENT AUTHORITY

STEPHENS COUNTY, GEORGIA  
AUGUST 2007

### STEPHENS COUNTY DEVELOPMENT AUTHORITY

#### DEVELOPMENT AUTHORITY BOARD

CHAIRMAN ROBERT J. DEFENBAUGH  
VICE-CHAIR KENNETH PEEPLES, COUNTY COMMISSION CHAIR  
SECRETARY MARIESA PAULISCSAK  
ASSISTANT SECRETARY DAVID AUSTIN, MAYOR  
TREASURER JENNIFER BLASINGAME  
EXECUTIVE DIRECTOR MITCHELL L. GRIGGS  
ADMINISTRATIVE ASSISTANT ANITA G. POOLE

STREET ADDRESS 102 WEST TUGALO STREET, SUITE 302  
TOCCOA, GEORGIA 30577

TELEPHONE NUMBER (706) 886-4242  
FAX NUMBER (706) 886-0010  
EMAIL ADDRESS info@scda.biz

24-HR EROSION & SEDIMENT ALAN SMITH, FACILITIES MANAGER  
CONTROL CONTACT (706) 886-9491

#### EROSION CONTROL CERTIFICATION

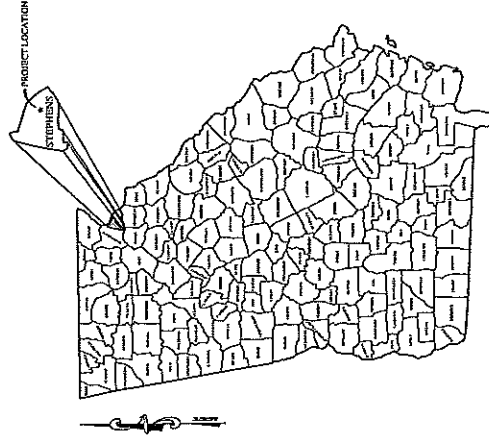
"I CERTIFY THAT THE PERMITTERS EROSION, SEDIMENTATION AND POLLUTION CONTROL PLAN PROVIDES FOR AN APPROPRIATE AND COMPREHENSIVE SYSTEM OF BEST MANAGEMENT PRACTICES TO PREVENT OR MINIMIZE EROSION, SEDIMENTATION AND THE DOCUMENT "MANUAL FOR EROSION AND SEDIMENT CONTROL IN GEORGIA" (MANUAL) AS PUBLISHED BY THE STATE SOIL AND WATER CONSERVATION COMMISSION AS OF JANUARY 1 OF THE YEAR IN WHICH THE LAND-DISTURBING ACTIVITY WAS PERMITTED, PROVIDES FOR THE SAMPLING AND RECEIVING WATERS ON THE SAMPLING OF THE STORM SAMPLING METHODS IS CONDUCTED TO MEET THE REQUIREMENTS CONTAINED IN THE GENERAL NPDES PERMIT CAR 100802."

"I CERTIFY UNDER PENALTY OF LAW THAT THIS PLAN WAS PREPARED AFTER A SITE VISIT TO THE PROJECT LOCATION BY MYSELF OR MY AUTHORIZED AGENT, UNDER MY DIRECT SUPERVISION."

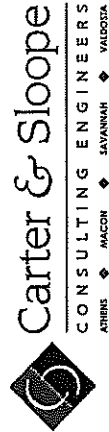
ROBERT C. HOWELL, P.E. 1993 06/29/2009 EXPIRATION  
LEVEL II CERTIFICATION NO. 706.789.6119 TEL. 706.789.6664 FAX 1031 STONEHEDGE PARKWAY, WATKINSVILLE, GA 30677

### INDEX TO DRAWINGS

SHT NO.	TITLE
1	GENERAL PROJECT INFORMATION
2-3	EROSION & SEDIMENTATION CONTROL PLAN
4	SAMPLING & ANALYSIS PLAN
5	INITIAL & FINAL PHASE EROSION & SEDIMENTATION PLAN
6	EROSION & SEDIMENTATION CONTROL DETAILS
7	OVERALL SITE PLAN
8	LEAD TRACK A PLAN & PROFILE
9	AT-GRADE CROSSING LEAD TRACK A & STATE ROUTE 17
10-17	RAILROAD DETAILS



VICINITY MAP



**Carter & Sloope**  
CONSULTING ENGINEERS  
ATHENS ♦ MACON ♦ SAVANNAH ♦ VALDOSTA

1031 STONEHEDGE PARKWAY, WATKINSVILLE, GA 30677 • 706.789.6119 TEL. • 706.789.6664 FAX



IF YOU DIG GEORGIA...  
CALL US FIRST!  
DIAL 811 OR  
1-800-282-7411  
UNITS PROTECTION CENTER  
IT'S THE LAW

REVISION NO.	DESCRIPTION	DATE
A	RELEASED FOR GOVERNMENT REVIEW	08/16/07
B	REVISED PER DOT COMMENTS	10/01/07
C	REVISED PER HARTWELL, GA	10/03/07
D	REVISED PER DOT COMMENTS	11/16/07
E	REVISED PER CAS COMMENTS	12/21/07



CODE	DETAIL	DESCRIPTION
(1)		...
(2)		...
(3)		...
(4)		...
(5)		...
(6)		...
(7)		...
(8)		...
(9)		...
(10)		...
(11)		...
(12)		...
(13)		...
(14)		...
(15)		...
(16)		...
(17)		...
(18)		...
(19)		...
(20)		...
(21)		...
(22)		...
(23)		...
(24)		...
(25)		...
(26)		...
(27)		...
(28)		...
(29)		...
(30)		...
(31)		...
(32)		...
(33)		...
(34)		...
(35)		...
(36)		...
(37)		...
(38)		...
(39)		...
(40)		...
(41)		...
(42)		...
(43)		...
(44)		...
(45)		...
(46)		...
(47)		...
(48)		...
(49)		...
(50)		...
(51)		...
(52)		...
(53)		...
(54)		...
(55)		...
(56)		...
(57)		...
(58)		...
(59)		...
(60)		...
(61)		...
(62)		...
(63)		...
(64)		...
(65)		...
(66)		...
(67)		...
(68)		...
(69)		...
(70)		...
(71)		...
(72)		...
(73)		...
(74)		...
(75)		...
(76)		...
(77)		...
(78)		...
(79)		...
(80)		...
(81)		...
(82)		...
(83)		...
(84)		...
(85)		...
(86)		...
(87)		...
(88)		...
(89)		...
(90)		...
(91)		...
(92)		...
(93)		...
(94)		...
(95)		...
(96)		...
(97)		...
(98)		...
(99)		...
(100)		...

MONTH	TEMPORARY SEDIMENTATION	PERMANENT SEDIMENTATION	PERMANENT VEGETATION	PERMANENT AND TEMPORARY VEGETATION
JANUARY	...	...	...	...
FEBRUARY	...	...	...	...
MARCH	...	...	...	...
APRIL	...	...	...	...
MAY	...	...	...	...
JUNE	...	...	...	...
JULY	...	...	...	...
AUGUST	...	...	...	...
SEPTEMBER	...	...	...	...
OCTOBER	...	...	...	...
NOVEMBER	...	...	...	...
DECEMBER	...	...	...	...

### GENERAL NOTES

- ALL TEMPORARY EROSION CONTROL MEASURES SHALL BE INSTALLED AND MAINTAINED IN ACCORDANCE WITH THE MANUAL FOR EROSION CONTROL AND SEDIMENTATION CONTROL IN GEORGIA (MANUAL) AS PUBLISHED BY THE STATE SOIL AND WATER CONSERVATION COMMISSION AS APPLICABLE TO THE PROJECT. THE MANUAL IS AVAILABLE FROM THE STATE SOIL AND WATER CONSERVATION COMMISSION, 1000 N. W. 12TH AVENUE, SUITE 1000, GAINESVILLE, FLORIDA 32609-1000. THE MANUAL IS AVAILABLE FOR PURCHASE AT A PRICE OF \$15.00 PER COPY.
- ALL EROSION CONTROL MEASURES SHALL BE CONDUCTED IN COMPLIANCE WITH THE EROSION AND SEDIMENTATION ACT OF 1970 AS AMENDED TO DATE. EROSION CONTROL MEASURES SHALL BE CONDUCTED IN ACCORDANCE WITH THE EROSION AND SEDIMENTATION ACT OF 1970 AS AMENDED TO DATE.
- ALL EROSION CONTROL MEASURES SHALL BE CONDUCTED IN ACCORDANCE WITH THE EROSION AND SEDIMENTATION ACT OF 1970 AS AMENDED TO DATE. EROSION CONTROL MEASURES SHALL BE CONDUCTED IN ACCORDANCE WITH THE EROSION AND SEDIMENTATION ACT OF 1970 AS AMENDED TO DATE.
- ALL EROSION CONTROL MEASURES SHALL BE CONDUCTED IN ACCORDANCE WITH THE EROSION AND SEDIMENTATION ACT OF 1970 AS AMENDED TO DATE. EROSION CONTROL MEASURES SHALL BE CONDUCTED IN ACCORDANCE WITH THE EROSION AND SEDIMENTATION ACT OF 1970 AS AMENDED TO DATE.
- ALL EROSION CONTROL MEASURES SHALL BE CONDUCTED IN ACCORDANCE WITH THE EROSION AND SEDIMENTATION ACT OF 1970 AS AMENDED TO DATE. EROSION CONTROL MEASURES SHALL BE CONDUCTED IN ACCORDANCE WITH THE EROSION AND SEDIMENTATION ACT OF 1970 AS AMENDED TO DATE.
- ALL EROSION CONTROL MEASURES SHALL BE CONDUCTED IN ACCORDANCE WITH THE EROSION AND SEDIMENTATION ACT OF 1970 AS AMENDED TO DATE. EROSION CONTROL MEASURES SHALL BE CONDUCTED IN ACCORDANCE WITH THE EROSION AND SEDIMENTATION ACT OF 1970 AS AMENDED TO DATE.
- ALL EROSION CONTROL MEASURES SHALL BE CONDUCTED IN ACCORDANCE WITH THE EROSION AND SEDIMENTATION ACT OF 1970 AS AMENDED TO DATE. EROSION CONTROL MEASURES SHALL BE CONDUCTED IN ACCORDANCE WITH THE EROSION AND SEDIMENTATION ACT OF 1970 AS AMENDED TO DATE.
- ALL EROSION CONTROL MEASURES SHALL BE CONDUCTED IN ACCORDANCE WITH THE EROSION AND SEDIMENTATION ACT OF 1970 AS AMENDED TO DATE. EROSION CONTROL MEASURES SHALL BE CONDUCTED IN ACCORDANCE WITH THE EROSION AND SEDIMENTATION ACT OF 1970 AS AMENDED TO DATE.
- ALL EROSION CONTROL MEASURES SHALL BE CONDUCTED IN ACCORDANCE WITH THE EROSION AND SEDIMENTATION ACT OF 1970 AS AMENDED TO DATE. EROSION CONTROL MEASURES SHALL BE CONDUCTED IN ACCORDANCE WITH THE EROSION AND SEDIMENTATION ACT OF 1970 AS AMENDED TO DATE.
- ALL EROSION CONTROL MEASURES SHALL BE CONDUCTED IN ACCORDANCE WITH THE EROSION AND SEDIMENTATION ACT OF 1970 AS AMENDED TO DATE. EROSION CONTROL MEASURES SHALL BE CONDUCTED IN ACCORDANCE WITH THE EROSION AND SEDIMENTATION ACT OF 1970 AS AMENDED TO DATE.

**CONTRACT A**  
INDUSTRIAL RAILWAY PLANS  
FOR THE  
HAYSTONE-BRADY INDUSTRIAL PARK DEVELOPMENT  
STEPHENS COUNTY DEVELOPMENT AUTHORITY  
STEPHENS COUNTY, GEORGIA

**Carter & Slope**  
CONSULTING ENGINEERS  
SAVANNAH • MACON • WADSWORTH  
10115 HUNTERS HOLLOW DRIVE, WADSWORTH, GA 30077, 770.249.4119 FAX 770.249.4148

DATE: AUGUST 2007  
SHEET NO.: 2  
OF 18 SHEETS

DESIGN: RCH  
DRAWN: BAW  
SCALE: AS SHOWN  
CROSS SECTION: 20'  
SHEET TAIL

**24 HOUR EROSION & SEDIMENTATION CONTROL PLAN**

ALAN SMITH  
FACILITIES MANAGER  
PHONE: (706) 886-9491

IF YOU DIG GEORGIA...  
CALL US FIRST:  
DIAL 811 OR  
1-800-282-7411  
UNLESS PROHIBITION CENTER  
IT'S THE LAW



**SAMPLING REQUIREMENTS**

THIS PERMIT requires the monitoring of nephelometric turbidity in receiving water(s) or outfalls in accordance with this permit. The following procedures constitute best practices for sampling turbidity. A. SAMPLING REQUIREMENTS SHALL INCLUDE THE FOLLOWING: 1. THE PERMITTEE SHALL CONDUCT SAMPLING DRAINAGE (REFERRED TO AS A TOPOGRAPHIC MAP) THAT IS SCALE EQUAL TO OR MORE DETAILED THAN A 1:50,000 MAP SHOWING THE LOCATION OF INFRASTRUCTURE CONSTRUCTION (A) THE LOCATION OF ALL PERENNIAL AND INTERMITTENT STREAMS AND OTHER WATER BODIES SHOWN ON A US TOPOGRAPHIC MAP, AND ALL OTHER PERENNIAL AND INTERMITTENT STREAMS AND OTHER WATER BODIES LOCATED DURING PERMITTING, INTO WHICH THE STORM WATER IS DISCHARGED AND (B) THE RECEIVING WATER AND/OR OUTFALL SAMPLING LOCATIONS FOR EACH REPRESENTATIVE STORMWATER OUTFALL. WHEN THE PERMITTEE HAS CHOSEN TO USE ANY OF THE RECEIVING WATER(S) LISTED ON THE TOPOGRAPHIC MAP FROM WHICH THE STORM WATER(S) INTENDS THE RECEIVING WATER(S) TO THE POINT WHERE THE RECEIVING WATER(S) COMBINES WITH THE FIRST BLUE LINE STREAM SHOWN ON THE USGS TOPOGRAPHIC MAP, STATE OF GEORGIA PAGE 30 OF 31 DEPARTMENT OF NATURAL RESOURCES PERMIT NO. GA00000Z ENVIRONMENTAL PROTECTION DIVISION

A.2. THE ANALYTICAL TECHNIQUE USED TO COLLECT AND ANALYZE THE SAMPLES INCLUDING QUALITY CONTROL/QUALITY ASSURANCE PROCEDURES THAT INCLUDE THESE SAMPLING TECHNIQUES FOR EACH SAMPLING LOCATION. A.3. WHEN THE PERMITTEE HAS DETERMINED THAT SOME OR ALL OUTFALLS WILL BE MONITORED, A RATIONALE MUST BE INCLUDED FOR THE INTENT(S) OF THE MONITORING. THIS RATIONALE MUST INCLUDE THE SIZE OF THE FACILITY OR INFRASTRUCTURE CONSTRUCTION, THE CALCULATION OF THE SIZE OF THE SURFACE WATER DRAINAGE AREA, AND THE TYPE OF RECEIVING WATER(S) (I.E., TREAT STREAM OR SUPPORTING WATER FISHERIES), AND A.4. ANY ADDITIONAL INFORMATION REQUIRED DETERMINED NECESSARY TO BE PART OF THE PLAN. THE PERMITTEE MUST PROVIDE WRITTEN INFORMATION TO THE PERMITTING AGENCY. B. SAMPLING TECHNIQUES SHALL BE COLLECTED BY LEAD SAMPLER AND THE ANALYSIS OF THESE SAMPLES MUST BE CONDUCTED IN ACCORDANCE WITH METHODOLOGY AND TEST PROCEDURES ESTABLISHED BY 40 CFR PART 136 (UNLESS OTHER TEST PROCEDURES HAVE BEEN APPROVED); THE GUIDANCE DOCUMENT TITLED "METHODS FOR WATER SAMPLING" (UNLESS OTHERWISE SPECIFIED), EPA 823-B-92-001 AND GUIDANCE DOCUMENTS THAT MAY BE PREPARED BY THE EPA. B.1. SAMPLE CONTAINERS SHOULD BE LABELED PRIOR TO COLLECTING THE SAMPLES. B.2. SAMPLES SHOULD BE WELL MIXED BEFORE TRANSFERRING TO A SECONDARY CONTAINER. B.3. LARGE MOUTH, NEIL CLEANED AND RINSED GLASS OR PLASTIC JARS SHOULD BE USED FOR COLLECTING SAMPLES. B.4. MANUAL AUTOMATIC OR USING STAGE SAMPLING MAY BE UTILIZED. SAMPLES REQUIRED BY THIS PERMIT SHOULD BE ANALYZED IMMEDIATELY, BUT IN NO CASE LATER THAN 48 HOURS AFTER COLLECTION. HOWEVER, SAMPLES FROM AUTOMATIC SAMPLING MUST BE COLLECTED NO LATER THAN THE NEXT BUSINESS DAY AFTER THEIR ACCUMULATION, UNLESS FLUX THROUGH AUTOMATED ANALYSIS IS UTILIZED. DILUTION OF SAMPLES IS NOT REQUIRED. SAMPLES MAY BE ANALYZED DIRECTLY WITH A PROPERLY CALIBRATED TURBIDIMETER. SAMPLES ARE NOT REQUIRED TO BE COOLED. B.5. SAMPLING AND ANALYSIS OF THE RECEIVING WATER(S) OR OUTFALLS BEYOND THE MINIMUM REQUIRED POINT STATED IN THIS PERMIT MUST BE REPORTED TO EPA AS SPECIFIED IN PART 14.E. C. SAMPLING POINTS. C.1. FOR CONSTRUCTION ACTIVITIES THE PERMITTEE MUST SAMPLE ALL PERENNIAL AND INTERMITTENT STREAMS AND OTHER WATER BODIES SHOWN ON THE USGS TOPOGRAPHIC MAP AND ALL OTHER FIELD VERIFIED PERENNIAL AND INTERMITTENT STREAMS AND OTHER WATER BODIES, OR ALL OUTFALLS INTO SUCH STREAMS AND OTHER WATER BODIES, OR A COMBINATION THEREOF. HOWEVER, PROVIDED FOR IN AND IN ACCORDANCE WITH PART 14.D.5.(2) OF THIS PERMIT, THE PERMITTEE MAY, AT HIS OR HER OPTION, USE OTHER WATER BODIES OR OUTFALLS, OR A COMBINATION THEREOF, SAMPLES TAKEN FOR THE PURPOSE OF COMPLIANCE WITH THIS PERMIT SHALL BE REPRESENTATIVE OF THE MONITORED ACTIVITY AND REPRESENTATIVE OF THE WATER QUALITY OF THE RECEIVING WATER(S) AND/OR THE STORM WATER OUTFALLS USING THE FOLLOWING MINIMUM GUIDELINES. C.1.A. THE UPSTREAM SAMPLE FOR EACH RECEIVING WATER(S) MUST BE TAKEN IMMEDIATELY UPSTREAM OF THE CONFLUENCE OF THE FIRST STORM WATER DISCHARGE FROM THE PERMITTED ACTIVITY (I.E., THE DISCHARGE ASSOCIATED WITH THE PERMITTED ACTIVITY) WHERE APPROPRIATE. FEDERAL STATE OF GEORGIA PAGE 30 OF 31 DEPARTMENT OF NATURAL RESOURCES PERMIT NO. GA00000Z ENVIRONMENTAL PROTECTION DIVISION C.1.B. SAMPLES FROM ACROSS THE RECEIVING WATER(S) MAY NEED TO BE TAKEN AND THE ARITHMETIC AVERAGE OF THE TURBIDITY OF THESE SAMPLES USED FOR THE UPSTREAM TURBIDITY VALUE. C.1.C. THE DOWNSTREAM SAMPLE FOR EACH RECEIVING WATER(S) MUST BE TAKEN DOWNSTREAM OF THE CONFLUENCE OF THE LAST STORM WATER DISCHARGE FROM THE PERMITTED ACTIVITY (I.E., THE DISCHARGE FARTHEST DOWNSTREAM AT THE SITE) USING THE FOLLOWING MINIMUM GUIDELINES. C.1.C.1. THE DOWNSTREAM SAMPLES SHOULD BE TAKEN FROM THE HORIZONTAL AND VERTICAL CENTER OF THE RECEIVING WATER(S) OR THE STORM WATER OUTFALL CHANNEL(S). C.1.C.2. CARE SHOULD BE TAKEN TO AVOID STIRRING THE BOTTOM DEPOSITS IN THE RECEIVING WATER(S) OR IN THE OUTFALL STORM WATER CHANNEL. C.1.C.3. THE SAMPLES SHOULD BE HELD SO THAT THE OPENING FACES UPSTREAM. C.1.C.4. PERMITTEES DO NOT HAVE TO SAMPLE SHELFLOW THAT FLOWS ONTO UNDISTURBED NATURAL AREAS OR AREAS STABILIZED BY THE PROJECT, FOR PURPOSES OF THIS SECTION. STABILIZED SHALL MEAN, FOR UNPAVED AREAS AND AREAS NOT COVERED BY PERMANENT STRUCTURES, 100% OF THE SOIL SURFACE IS UNIFORMLY COVERED IN PERMANENT VEGETATION WITH A DENSITY OF 10% OR GREATER, OR EQUIVALENT PERMANENT STABILIZATION MEASURES (SUCH AS THE USE OF NET MAT, GRASS, PERMANENT MULCHES OR GEOTEXTILES) HAVE BEEN USED. C.1.C.5. THE PERMITTEE SHALL CONDUCT VISUAL INSPECTIONS OF THE VEGETATION APPROPRIATE FOR THE TIME OF YEAR AND REGION OR A GRAP OF ANNUAL VEGETATION AND A SEEDING OF "PASTURE CROP PERENNIALS APPROPRIATE FOR THE REGION. FOR INFRASTRUCTURE CONSTRUCTION PROJECTS ON LAND USED FOR AGRICULTURAL OR SILVICULTURAL PURPOSES, FINAL STABILIZATION MAY BE ACCOMPLISHED BY STABILIZING THE DISTURBED LAND FOR ITS AGRICULTURAL OR SILVICULTURAL USE. FINAL STABILIZATION APPLIES TO EACH PHASE OF CONSTRUCTION. ALL SAMPLING PROCEDURES TO THIS PERMIT MUST BE DONE IN SUCH A WAY (INCLUDING GENERALLY ACCEPTED BEST PRACTICES) AS TO AVOID DISTURBING THE RECEIVING WATER(S) OR OUTFALLS. SAMPLING PROCEDURES MUST BE IN COMPLIANCE WITH THE STANDARD SET FORTH IN PARTS 14.C.3. OR 14.C.4. WHICHEVER IS APPLICABLE.

**SAMPLING REQUIREMENTS (cont.)**

C.2. FOR INFRASTRUCTURE CONSTRUCTION PROJECTS, THE PERMITTEE IS NOT REQUIRED TO SAMPLE A PERENNIAL OR INTERMITTENT STREAM OR OTHER WATER BODIES (OR THE ASSOCIATED OUTFALL, IF APPLICABLE) IF THE DESIGN OF THE PROJECT WILL NOT CAUSE AN INCREASE IN THE TURBIDITY OF A SPECIFIC RECEIVING WATER TO BE SAMPLED NOR BE REPRESENTATIVE OF THE INCREASE IN THE TURBIDITY OF A SPECIFIC IDENTIFIED UN-SAMPLED RECEIVING WATER. A WRITTEN RATIONALE AND DETAILED ANALYSIS SHALL BE PREPARED BY THE DESIGN PROFESSIONAL JUSTIFYING SUCH PROPOSED SAMPLING. THE RATIONALE AND ANALYSIS SHALL INCLUDE THE LOCATION AND DESCRIPTION OF THE SPECIFIED SAMPLED AND UN-SAMPLED RECEIVING WATER AND SHALL CONTAIN A DETAILED COMPARISON AND DISCUSSION OF EACH SUCH RECEIVING WATER IN THE FOLLOWING AREAS: C.2.A. SITE LAND DISTURBANCES AND CHARACTERISTICS. C.2.B. THE LOCATION AND CHARACTERISTICS OF THE RECEIVING WATER(S) AND STATE OF GEORGIA PAGE 22 OF 31 DEPARTMENT OF NATURAL RESOURCES PERMIT NO. GA00000Z ENVIRONMENTAL PROTECTION DIVISION C.2.C. DATE AND MAINTENANCE SCHEDULES UTILIZING THE METHODS IN APPENDIX A-1 (LIMITED SITED MATHEMATICS) OF THE MOST RECENT VERSION OF THE MANUAL FOR EROSION AND SEDIMENTATION CONTROL IN GEORGIA FOR THE VARIOUS RECEIVING WATER(S) AND ANY OTHER SUCH CONSIDERATIONS NECESSARY TO SHOW THAT THE INCREASE IN THE TURBIDITY OF A SPECIFIC IDENTIFIED SAMPLED RECEIVING WATER WILL BE REPRESENTATIVE OF THE INCREASES IN THE TURBIDITY OF A SPECIFIC IDENTIFIED UN-SAMPLED RECEIVING WATER(S).

C.3. FOR INFRASTRUCTURE CONSTRUCTION, WHEN THE PERMITTEE DETERMINES THAT SOME RECEIVING WATER(S) WILL NOT BE SAMPLED DUE TO REPRESENTATIVE SAMPLING, THE DESIGN PROFESSIONAL MUST INCLUDE THE FOLLOWING INFORMATION IN THE PLAN AND SIGN IN ACCORDANCE WITH PART V.G. OF THIS PERMIT: PRELIMINARY CERTIFICATION, A CERTIFICATION THAT THE PERMITTEES DESIGN, SEDIMENTATION AND POLLUTION CONTROL PLAN PROVIDED FOR THE MONITORING ON (A) ALL PERENNIAL AND INTERMITTENT STREAMS AND OTHER WATER BODIES AND OTHER WATER BODIES, OR (B) WHERE ANY SUCH SPECIFIC IDENTIFIED PERENNIAL OR INTERMITTENT STREAM AND OTHER WATER BODY IS NOT PROPOSED TO BE SAMPLED, I HAVE DETERMINED IN MY PROFESSIONAL JUDGMENT, UTILIZING THE FACTORS REQUIRED IN THE GENERAL NOTES PERMIT NO. GA0000Z, THAT THE INCREASE IN THE TURBIDITY OF EACH SPECIFIC IDENTIFIED SAMPLED RECEIVING WATER WILL BE REPRESENTATIVE OF THE INCREASE IN THE TURBIDITY OF A SPECIFIC IDENTIFIED UN-SAMPLED RECEIVING WATER. C.4. FOR INFRASTRUCTURE CONSTRUCTION PROJECTS, MONITORING OBLIGATIONS SHALL CEASE FOR ANY PHASE OF THE PROJECT THAT HAS BEEN STABILIZED IN ACCORDANCE WITH PART 14.D.3.C.(1), (2), (3), (4), (5), (6), (7), (8), (9), (10), (11), (12), (13), (14), (15), (16), (17), (18), (19), (20), (21), (22), (23), (24), (25), (26), (27), (28), (29), (30), (31), (32), (33), (34), (35), (36), (37), (38), (39), (40), (41), (42), (43), (44), (45), (46), (47), (48), (49), (50), (51), (52), (53), (54), (55), (56), (57), (58), (59), (60), (61), (62), (63), (64), (65), (66), (67), (68), (69), (70), (71), (72), (73), (74), (75), (76), (77), (78), (79), (80), (81), (82), (83), (84), (85), (86), (87), (88), (89), (90), (91), (92), (93), (94), (95), (96), (97), (98), (99), (100), (101), (102), (103), (104), (105), (106), (107), (108), (109), (110), (111), (112), (113), (114), (115), (116), (117), (118), (119), (120), (121), (122), (123), (124), (125), (126), (127), (128), (129), (130), (131), (132), (133), (134), (135), (136), (137), (138), (139), (140), (141), (142), (143), (144), (145), (146), (147), (148), (149), (150), (151), (152), (153), (154), (155), (156), (157), (158), (159), (160), (161), (162), (163), (164), (165), (166), (167), (168), (169), (170), (171), (172), (173), (174), (175), (176), (177), (178), (179), (180), (181), (182), (183), (184), (185), (186), (187), (188), (189), (190), (191), (192), (193), (194), (195), (196), (197), (198), (199), (200), (201), (202), (203), (204), (205), (206), (207), (208), (209), (210), (211), (212), (213), (214), (215), (216), (217), (218), (219), (220), (221), (222), (223), (224), (225), (226), (227), (228), (229), (230), (231), (232), (233), (234), (235), (236), (237), (238), (239), (240), (241), (242), (243), (244), (245), (246), (247), (248), (249), (250), (251), (252), (253), (254), (255), (256), (257), (258), (259), (260), (261), (262), (263), (264), (265), (266), (267), (268), (269), (270), (271), (272), (273), (274), (275), (276), (277), (278), (279), (280), (281), (282), (283), (284), (285), (286), (287), (288), (289), (290), (291), (292), (293), (294), (295), (296), (297), (298), (299), (300), (301), (302), (303), (304), (305), (306), (307), (308), (309), (310), (311), (312), (313), (314), (315), (316), (317), (318), (319), (320), (321), (322), (323), (324), (325), (326), (327), (328), (329), (330), (331), (332), (333), (334), (335), (336), (337), (338), (339), (340), (341), (342), (343), (344), (345), (346), (347), (348), (349), (350), (351), (352), (353), (354), (355), (356), (357), (358), (359), (360), (361), (362), (363), (364), (365), (366), (367), (368), (369), (370), (371), (372), (373), (374), (375), (376), (377), (378), (379), (380), (381), (382), (383), (384), (385), (386), (387), (388), (389), (390), (391), (392), (393), (394), (395), (396), (397), (398), (399), (400), (401), (402), (403), (404), (405), (406), (407), (408), (409), (410), (411), (412), (413), (414), (415), (416), (417), (418), (419), (420), (421), (422), (423), (424), (425), (426), (427), (428), (429), (430), (431), (432), (433), (434), (435), (436), (437), (438), (439), (440), (441), (442), (443), (444), (445), (446), (447), (448), (449), (450), (451), (452), (453), (454), (455), (456), (457), (458), (459), (460), (461), (462), (463), (464), (465), (466), (467), (468), (469), (470), (471), (472), (473), (474), (475), (476), (477), (478), (479), (480), (481), (482), (483), (484), (485), (486), (487), (488), (489), (490), (491), (492), (493), (494), (495), (496), (497), (498), (499), (500), (501), (502), (503), (504), (505), (506), (507), (508), (509), (510), (511), (512), (513), (514), (515), (516), (517), (518), (519), (520), (521), (522), (523), (524), (525), (526), (527), (528), (529), (530), (531), (532), (533), (534), (535), (536), (537), (538), (539), (540), (541), (542), (543), (544), (545), (546), (547), (548), (549), (550), (551), (552), (553), (554), (555), (556), (557), (558), (559), (560), (561), (562), (563), (564), (565), (566), (567), (568), (569), (570), (571), (572), (573), (574), (575), (576), (577), (578), (579), (580), (581), (582), (583), (584), (585), (586), (587), (588), (589), (590), (591), (592), (593), (594), (595), (596), (597), (598), (599), (600), (601), (602), (603), (604), (605), (606), (607), (608), (609), (610), (611), (612), (613), (614), (615), (616), (617), (618), (619), (620), (621), (622), (623), (624), (625), (626), (627), (628), (629), (630), (631), (632), (633), (634), (635), (636), (637), (638), (639), (640), (641), (642), (643), (644), (645), (646), (647), (648), (649), (650), (651), (652), (653), (654), (655), (656), (657), (658), (659), (660), (661), (662), (663), (664), (665), (666), (667), (668), (669), (670), (671), (672), (673), (674), (675), (676), (677), (678), (679), (680), (681), (682), (683), (684), (685), (686), (687), (688), (689), (690), (691), (692), (693), (694), (695), (696), (697), (698), (699), (700), (701), (702), (703), (704), (705), (706), (707), (708), (709), (710), (711), (712), (713), (714), (715), (716), (717), (718), (719), (720), (721), (722), (723), (724), (725), (726), (727), (728), (729), (730), (731), (732), (733), (734), (735), (736), (737), (738), (739), (740), (741), (742), (743), (744), (745), (746), (747), (748), (749), (750), (751), (752), (753), (754), (755), (756), (757), (758), (759), (760), (761), (762), (763), (764), (765), (766), (767), (768), (769), (770), (771), (772), (773), (774), (775), (776), (777), (778), (779), (780), (781), (782), (783), (784), (785), (786), (787), (788), (789), (790), (791), (792), (793), (794), (795), (796), (797), (798), (799), (800), (801), (802), (803), (804), (805), (806), (807), (808), (809), (810), (811), (812), (813), (814), (815), (816), (817), (818), (819), (820), (821), (822), (823), (824), (825), (826), (827), (828), (829), (830), (831), (832), (833), (834), (835), (836), (837), (838), (839), (840), (841), (842), (843), (844), (845), (846), (847), (848), (849), (850), (851), (852), (853), (854), (855), (856), (857), (858), (859), (860), (861), (862), (863), (864), (865), (866), (867), (868), (869), (870), (871), (872), (873), (874), (875), (876), (877), (878), (879), (880), (881), (882), (883), (884), (885), (886), (887), (888), (889), (890), (891), (892), (893), (894), (895), (896), (897), (898), (899), (900), (901), (902), (903), (904), (905), (906), (907), (908), (909), (910), (911), (912), (913), (914), (915), (916), (917), (918), (919), (920), (921), (922), (923), (924), (925), (926), (927), (928), (929), (930), (931), (932), (933), (934), (935), (936), (937), (938), (939), (940), (941), (942), (943), (944), (945), (946), (947), (948), (949), (950), (951), (952), (953), (954), (955), (956), (957), (958), (959), (960), (961), (962), (963), (964), (965), (966), (967), (968), (969), (970), (971), (972), (973), (974), (975), (976), (977), (978), (979), (980), (981), (982), (983), (984), (985), (986), (987), (988), (989), (990), (991), (992), (993), (994), (995), (996), (997), (998), (999), (1000).

NO. OF SHEETS	1
TOTAL NO. OF SHEETS	4
DATE	AUGUST 2007

CONTRACT A  
INDUSTRIAL RAILWAY PLANS  
HAYSTONE-BRADY INDUSTRIAL PARK DEVELOPMENT  
FOR THE  
STEPHENS COUNTY DEVELOPMENT AUTHORITY  
STEPHENS COUNTY, GEORGIA

**Carter & Slope**  
CONSULTING ENGINEERS  
ATLANTA • MACON • SAVANNAH • VALDOSTA

1251 TOWNSHEDGE FARMWAY, WAINWRIGHTVILLE, GA 30077 706.274.1173 706.274.4644 FAX

OWNER	STEPHENS COUNTY DEVELOPMENT AUTHORITY
DESIGNER	CARTER & SLOPE
SCALE	AS SHOWN
DATE	AUGUST 2007
PROJECT NO.	07000003
SHEET NO.	4
TOTAL SHEETS	4



**SAMPLING & ANALYSIS PLAN**

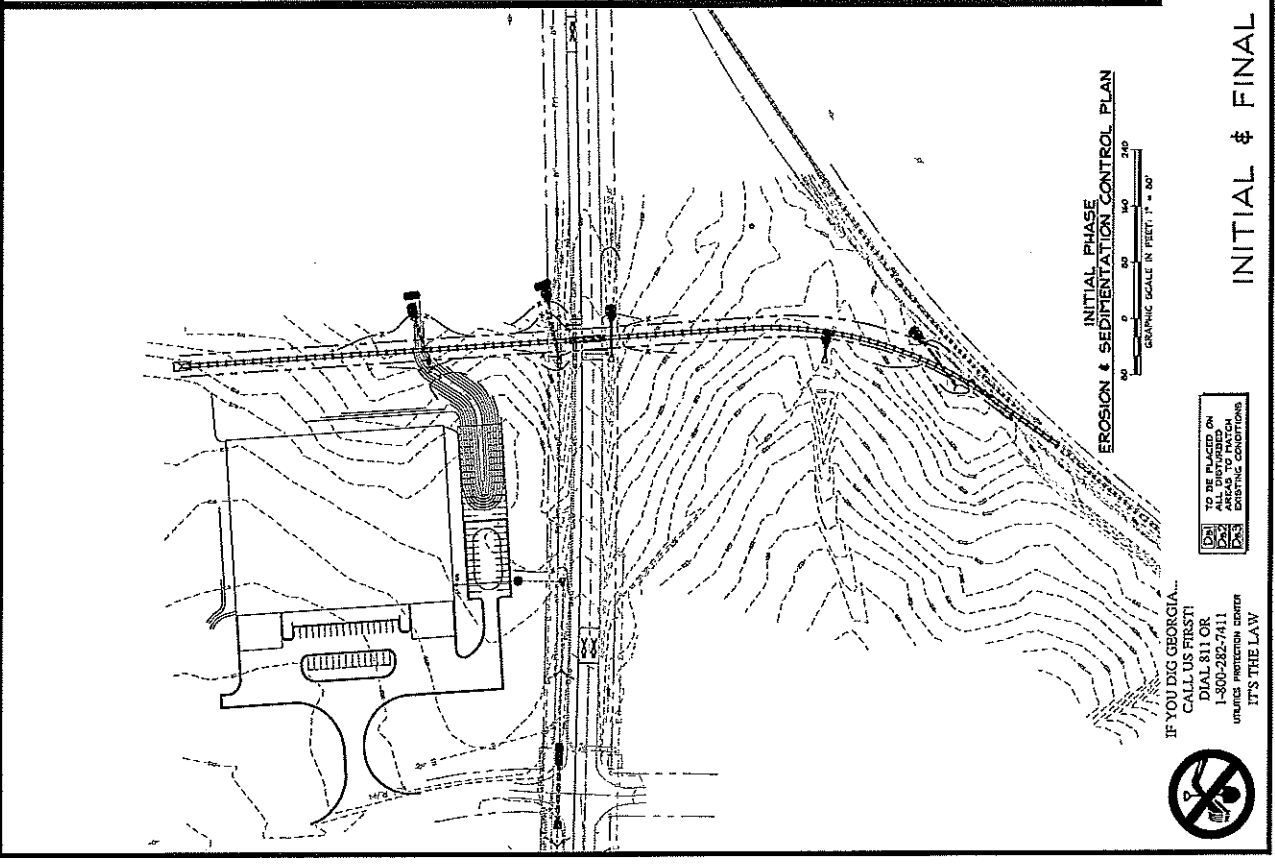
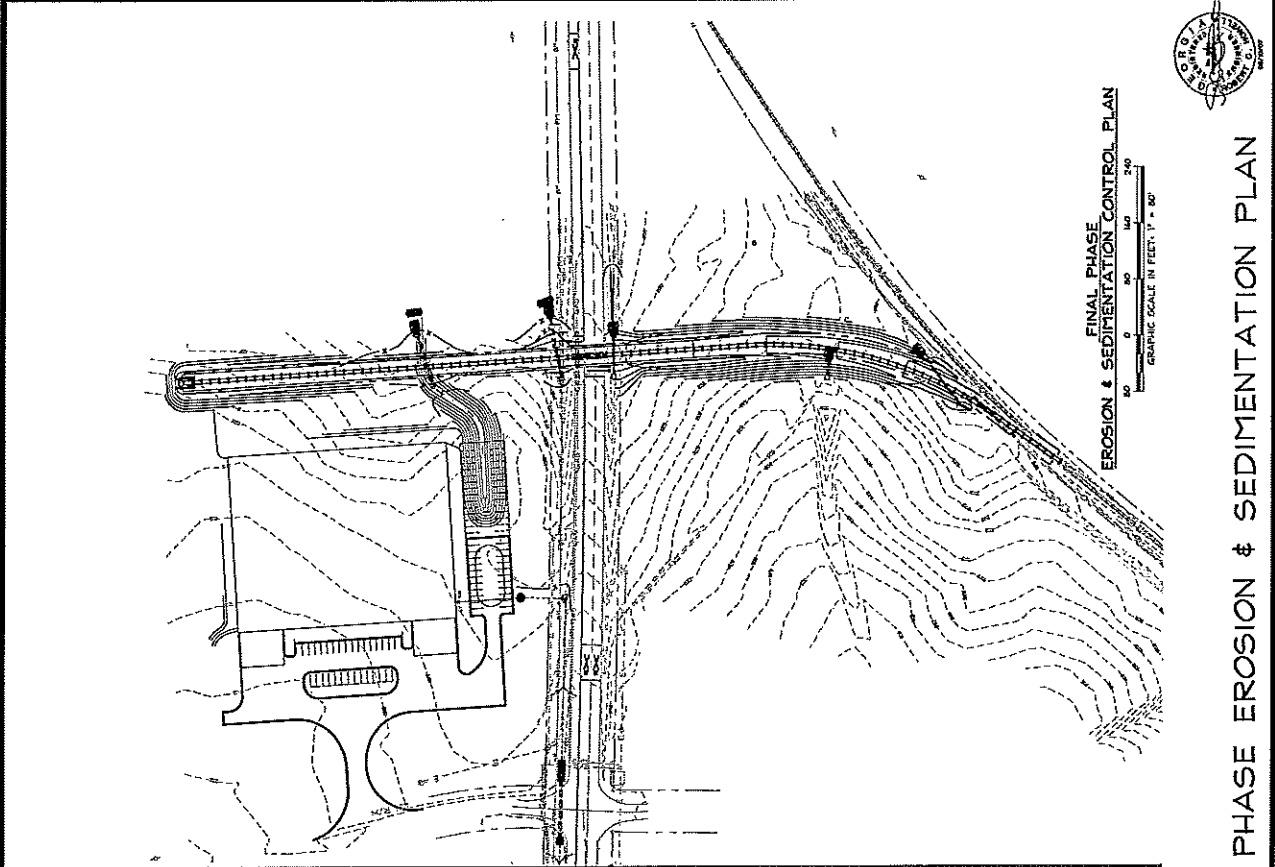
EXCERPT FROM THE STATE OF GEORGIA, DEPARTMENT OF NATURAL RESOURCES, ENVIRONMENTAL PROTECTION DIVISIONS GENERAL PERMIT NO. GA00000Z

REVISIONS			
1	ISSUED FOR PERMIT	8/2/07	
2	REVISED FOR COMMENTS	8/15/07	
3	REVISED FOR COMMENTS	8/22/07	
4	REVISED FOR COMMENTS	8/29/07	
5	REVISED FOR COMMENTS	9/5/07	

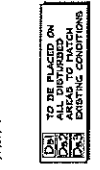
CONTRACT A  
 INDUSTRIAL RAILWAY PLANS  
 HAYSTONE-BRADY INDUSTRIAL PARK DEVELOPMENT  
 FOR THE  
 STEPHENS COUNTY DEVELOPMENT AUTHORITY  
 STEPHENS COUNTY, GEORGIA

**Carter & Sloope**  
 CONSULTING ENGINEERS  
 ATLANTA ♦ MACON ♦ SAVANNAH ♦ VALDOSTA  
 1031 STONEIDGE PARKWAY, WAINESVILLE, GA 30277, 706.749.4119 FAX 706.749.4544

DATE: 8/2/07  
 DRAWN: J. SMITH  
 SCALE: AS SHOWN  
 CIVIL NUMBER: EROSION CONTROL  
 PROJ. NO.: 200601005  
 SHEET NO.: 5  
 SHEET TITLE: INITIAL & FINAL PHASE EROSION & SEDIMENTATION CONTROL PLAN  
 DATE: AUGUST 2007  
 OF 18 SHEETS



IF YOU DIG GEORGIA...  
 CALL US FIRST!  
 DIAL 811 OR  
 1-800-285-7411  
 UNLESS OTHERWISE NOTED  
 IT'S THE LAW



INITIAL & FINAL PHASE EROSION & SEDIMENTATION PLAN

REVISIONS:	
1. REVISED FOR BEST PRACTICES	10/15/09
2. REVISED FOR BEST PRACTICES	10/15/09
3. REVISED FOR BEST PRACTICES	10/15/09
4. REVISED FOR BEST PRACTICES	10/15/09
5. REVISED FOR BEST PRACTICES	10/15/09

CONTRACT A  
 INDUSTRIAL RAILWAY PARK DEVELOPMENT  
 FOR THE  
 STEPHENS COUNTY DEVELOPMENT AUTHORITY  
 STEPHENS COUNTY, GEORGIA

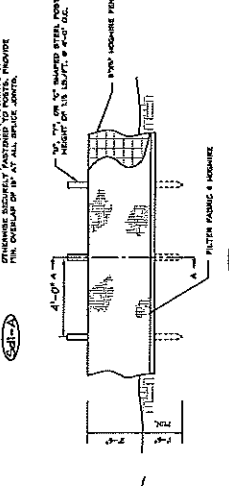
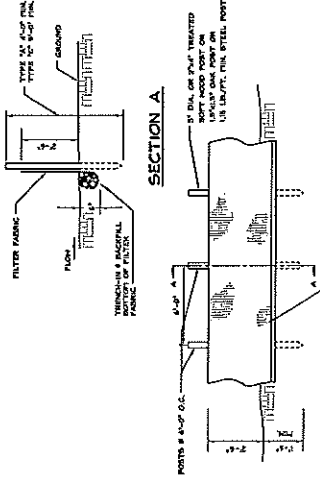
**Carter & Slope**  
 CONSULTING ENGINEERS  
 ARDEN ♦ MACON ♦ JAYNAH ♦ WILDOSSA

1031 STONETRIDGE PARKWAY, WATKINSVILLE, GA 30677, 706.339.4131 TEL. 706.339.4544 FAX

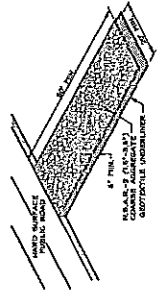
PROJ. NO.: 59003.005  
 SHEET NO.: 6  
 DATE: AUGUST 2007  
 DRAWN: BHW  
 CHECKED: ASB  
 DESIGNED: BHW



NOTE: SILT FENCE INSTALLATION & MATERIALS SHALL MEET THE SPECIFIC REQUIREMENTS OF SECTION 17 OF THE GA DOT SPECIFICATION (LATEST EDITION)



**SEDIMENT BARRIER-SILT FENCE**  
 N.T.S.

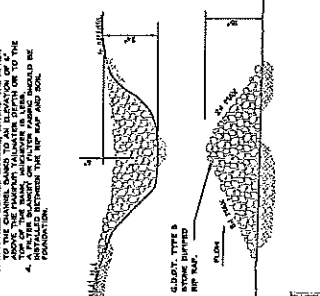


**CONSTRUCTION EXIT DETAIL**  
 N.T.S.

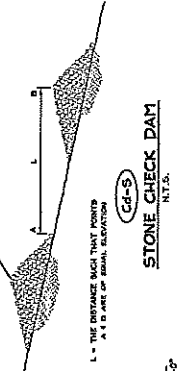
CONTRACT CONSTRUCTION EXITS AT LOCATIONS MARKED ON THE REGIONAL CONTROL PLAN SHALL BE CONSTRUCTED AND MAINTAINED IN ACCORDANCE WITH THE FOLLOWING REQUIREMENTS:

- 1. EXITS SHALL BE CONSTRUCTED WITH A MINIMUM WIDTH OF 10 FEET AND SHALL BE PAVED OR GRADDED WITH GEOTEXTILE FABRIC.
- 2. EXITS SHALL BE MAINTAINED IN A CONDITION WHICH WILL ALLOW TRUCKS TO ENTER AND EXIT WITHOUT CAUSING EXCESSIVE DUST OR PARTICULATE TO BE RELEASED INTO THE AIR.
- 3. EXITS SHALL BE MAINTAINED IN A CONDITION WHICH WILL ALLOW TRUCKS TO ENTER AND EXIT WITHOUT CAUSING EXCESSIVE DUST OR PARTICULATE TO BE RELEASED INTO THE AIR.
- 4. EXITS SHALL BE MAINTAINED IN A CONDITION WHICH WILL ALLOW TRUCKS TO ENTER AND EXIT WITHOUT CAUSING EXCESSIVE DUST OR PARTICULATE TO BE RELEASED INTO THE AIR.

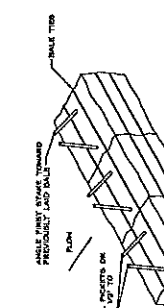
NOTE: 1. USE THE LAYOUT FOR THE STONE CHECK DAM. 2. 2" DIA. OR 1/4" DIA. TREATED STEEL POSTS OR 1/2" DIA. GALV. STEEL POSTS @ 4'-0" O.C. 3. IF A HILL-DRYING CHANNEL, BENTEN THE APPROX. 10' TO 15' FROM THE CHANNEL TO THE STONE CHECK DAM. 4. A FILTER FABRIC OR FILTER FABRIC SHOULD BE INSTALLED BETWEEN THE RIP RAP AND SOIL.



**STONE CHECK DAM**  
 N.T.S.



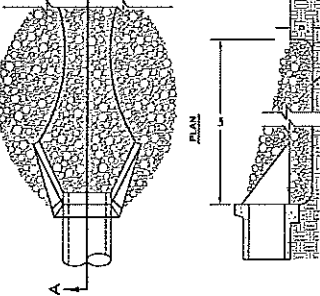
**TEMPORARY SEDIMENT BARRIER HAYBALES**  
 N.T.S.



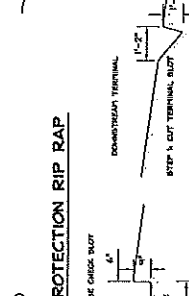
**ANCHORING DETAIL**  
 EMBEDDING DETAIL

IF YOU DIG GEORGIA... CALL US FIRST... DIAL 811 OR 1-800-282-7411 UNDER PROVISIONS OF THE GEORGIA UTILITY LOCATING ACT. IT'S THE LAW.

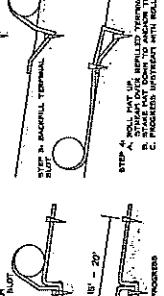
NOTE: 1. USE THE LAYOUT FOR THE STONE CHECK DAM. 2. 2" DIA. OR 1/4" DIA. TREATED STEEL POSTS OR 1/2" DIA. GALV. STEEL POSTS @ 4'-0" O.C. 3. IF A HILL-DRYING CHANNEL, BENTEN THE APPROX. 10' TO 15' FROM THE CHANNEL TO THE STONE CHECK DAM. 4. A FILTER FABRIC OR FILTER FABRIC SHOULD BE INSTALLED BETWEEN THE RIP RAP AND SOIL.



**STORM DRAIN OUTLET PROTECTION RIP RAP**  
 N.T.S.



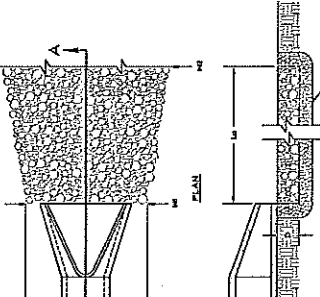
**TYPICAL INSTALLATION GUIDELINES FOR MATTING AND BLANKETS**  
 N.T.S.



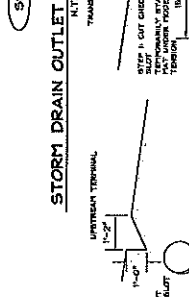
**SEE NOTE**

1. MATTING AT DOWNSTREAM TERMINAL AND UPSTREAM TERMINAL SHALL BE STABILIZED TO PREVENT WIND-UP. 2. MATTING SHALL BE STABILIZED TO PREVENT WIND-UP. 3. MATTING SHALL BE STABILIZED TO PREVENT WIND-UP. 4. MATTING SHALL BE STABILIZED TO PREVENT WIND-UP. 5. MATTING SHALL BE STABILIZED TO PREVENT WIND-UP.

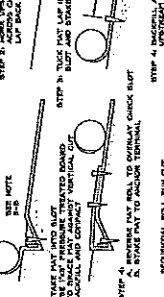
NOTE: 1. USE THE LAYOUT FOR THE STONE CHECK DAM. 2. 2" DIA. OR 1/4" DIA. TREATED STEEL POSTS OR 1/2" DIA. GALV. STEEL POSTS @ 4'-0" O.C. 3. IF A HILL-DRYING CHANNEL, BENTEN THE APPROX. 10' TO 15' FROM THE CHANNEL TO THE STONE CHECK DAM. 4. A FILTER FABRIC OR FILTER FABRIC SHOULD BE INSTALLED BETWEEN THE RIP RAP AND SOIL.



**STORM DRAIN OUTLET PROTECTION RIP RAP**  
 N.T.S.



**SEE NOTE**



**SEE NOTE**

1. MATTING AT DOWNSTREAM TERMINAL AND UPSTREAM TERMINAL SHALL BE STABILIZED TO PREVENT WIND-UP. 2. MATTING SHALL BE STABILIZED TO PREVENT WIND-UP. 3. MATTING SHALL BE STABILIZED TO PREVENT WIND-UP. 4. MATTING SHALL BE STABILIZED TO PREVENT WIND-UP. 5. MATTING SHALL BE STABILIZED TO PREVENT WIND-UP.

**EROSION & SEDIMENTATION CONTROL DETAILS**

